



Juvo

newstandardcbd@gmail.com

Sample 250-031621-021

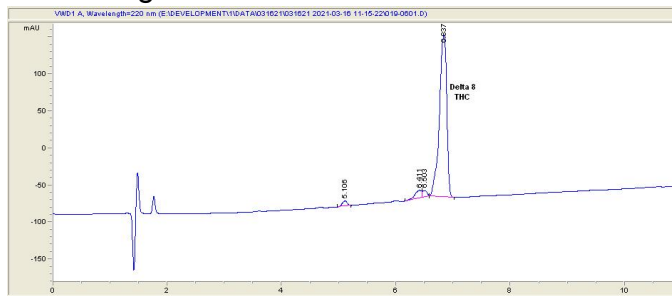
Juvo "ATF" concentrate

Sample Submitted: 01-16-2022; Report Date: 01-16-2022

Juvo "ATF" concentrate

Distillate

Chromatogram



Cannabinoid Profile



Cannabinoid Profile by HPLC

0.00%
Calculated THC Yield

0.00%
Calculated CBD Yield

86.46%
Total Cannabinoids

| Cannabinoid | % wt | mg/g |
|---|--------------|--------------|
| Delta-8-THC | 86.46 | 864.6 |
| THC | 0.0 | 0.0 |
| Total Cannabinoids | 86.46 | 864.6 |
| Calculated THC Yield | 0.00 | 0.00 |
| Calculated CBD Yield | 0.00 | 0.00 |
| Calculated Maximum THC Yield = THC + 0.877 * THCA | | |
| Calculated Maximum CBD Yield = CBD + 0.877 * CBDA | | |

Marin Analytics, LLC
250 Bel Marin Keys Blvd, Suite D4
Novato, CA 94949

415-936-6477 / Support@MarinAnalytics.com

Sara Biancalana
Chief Scientist

This sample has been tested by Marin Analytics, LLC using valid testing methodologies and a quality system. Values reported relate only to the sample tested. Marin Analytics, LLC makes no claims as to the efficacy, safety or other risks associated with any detected or non-detected levels of any compounds reported herein. This Certificate shall not be reproduced except in full, without the written approval of Marin Analytics, LLC.