



**Juvo**

newstandardcbd@gmail.com

**Sample 250-031621-028**

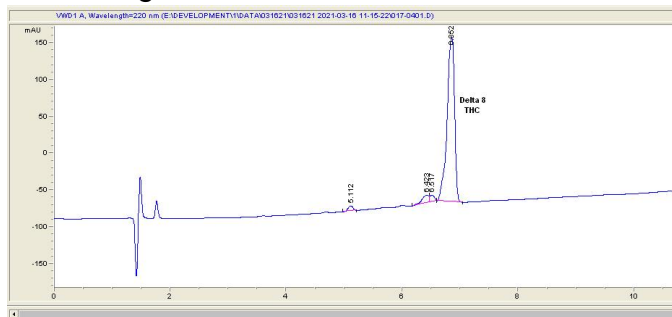
Juvo "Train Wreck" cartridge Sample

Submitted: 02-16-2022; Report Date: 02-16-2022

## Juvo "Train Wreck" cartridge

Distillate

### Chromatogram



### Cannabinoid Profile



### Cannabinoid Profile by HPLC

**0.00%**  
 Calculated THC Yield

**0.00%**  
 Calculated CBD Yield

**90.60%**  
 Total Cannabinoids

Cannabinoid	% wt	mg/g
Delta-8-THC	90.6	906.0
THC	0.0	0.0
<b>Total Cannabinoids</b>	<b>90.60</b>	<b>906.0</b>
<b>Calculated THC Yield</b>	<b>0.00</b>	<b>0.00</b>
<b>Calculated CBD Yield</b>	<b>0.00</b>	<b>0.00</b>
Calculated Maximum THC Yield = THC + 0.877 * THCA		
Calculated Maximum CBD Yield = CBD + 0.877 * CBDA		

**Marin Analytics, LLC**  
 250 Bel Marin Keys Blvd, Suite D4  
 Novato, CA 94949

415-936-6477 / Support@MarinAnalytics.com

**Sara Biancalana**  
 Chief Scientist

This sample has been tested by Marin Analytics, LLC using valid testing methodologies and a quality system. Values reported relate only to the sample tested. Marin Analytics, LLC makes no claims as to the efficacy, safety or other risks associated with any detected or non-detected levels of any compounds reported herein. This Certificate shall not be reproduced except in full, without the written approval of Marin Analytics, LLC.